



# Digital Twin Identifiers: References and Containers

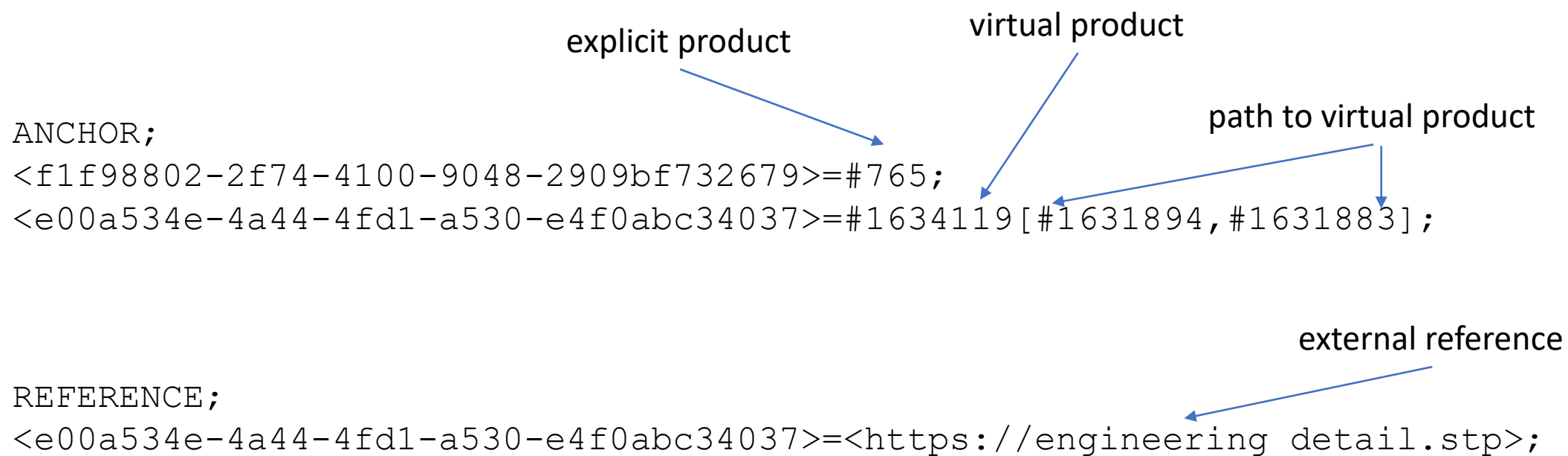
Wednesday June 29<sup>th</sup>, 2022

Martin Hardwick

Convenor WG15

# Link using references

- Anchor section defines a UUID for each referenceable item
- Reference section uses the anchors to link items



Is reference section redundant for items in same container?



# Containers define a scope

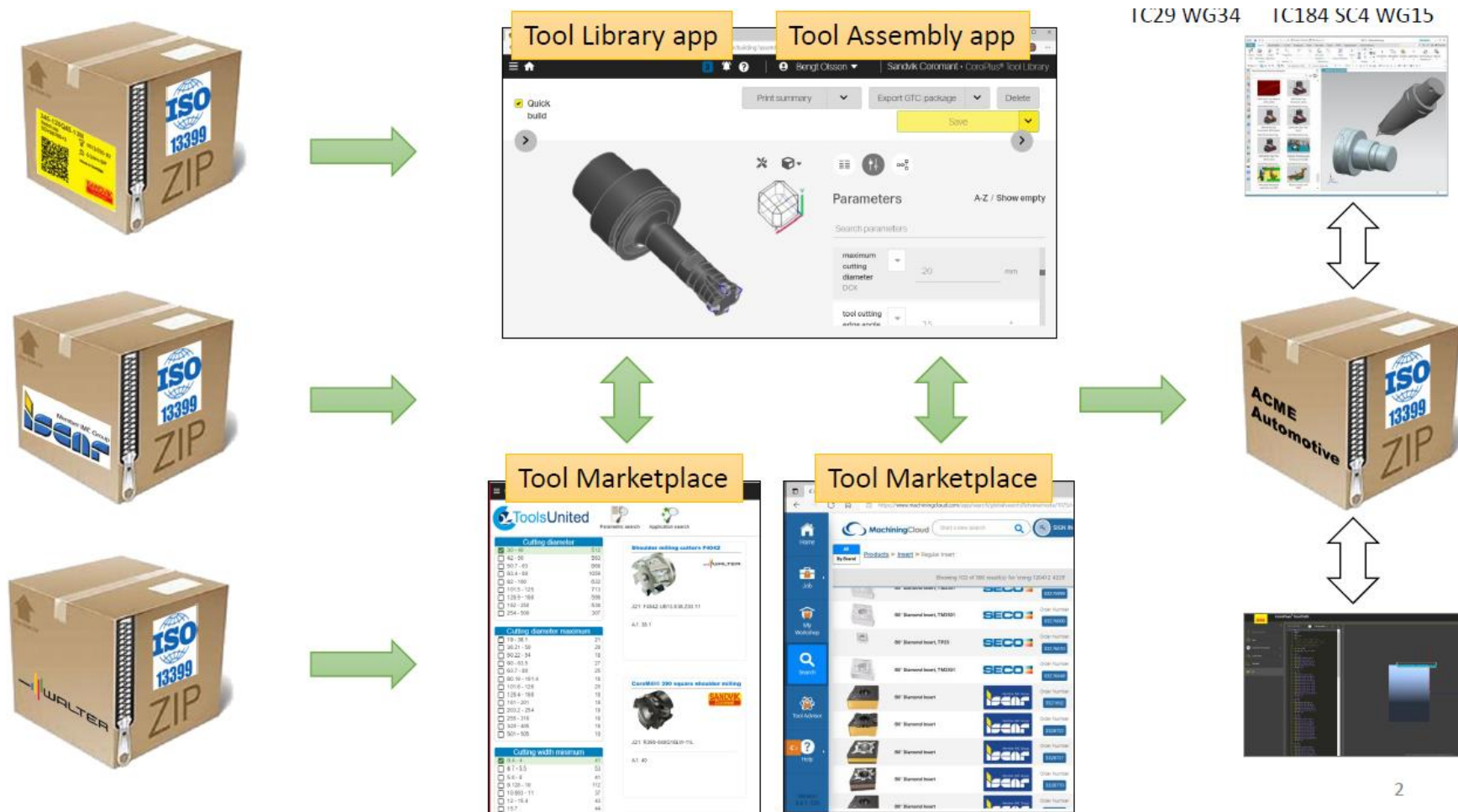
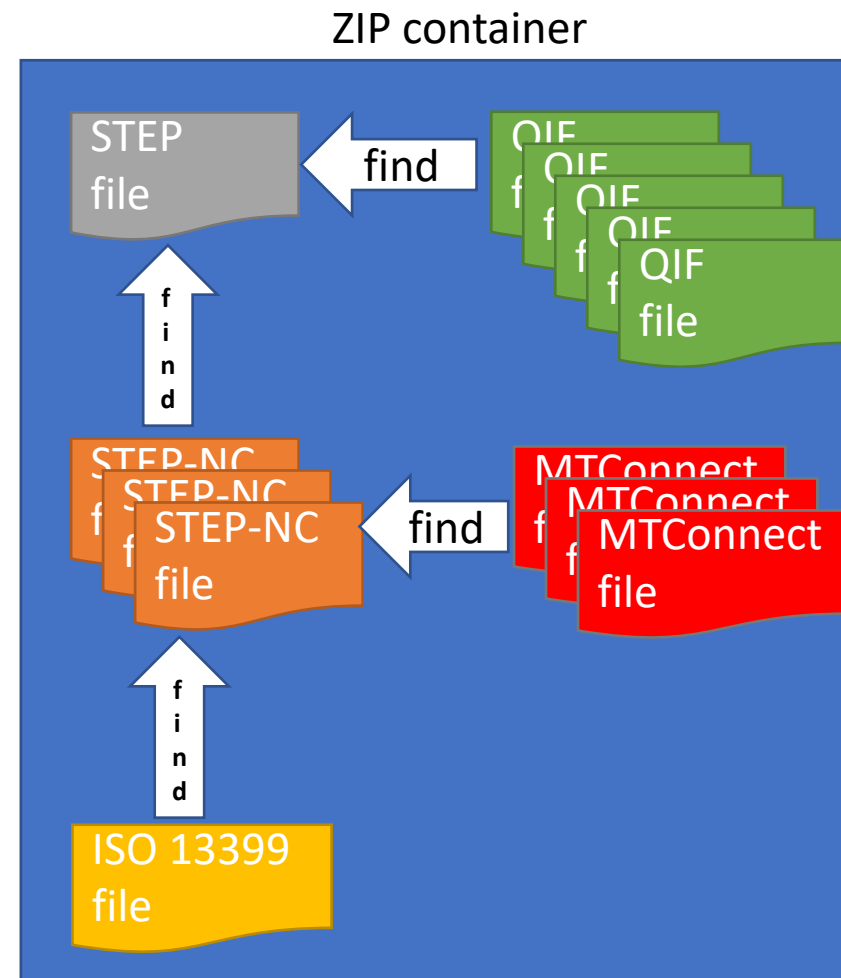


Illustration made by TC29 WG34 of a container for selected cutting tools

# Example – link by UUID associativity

- Start with a STEP file containing condition of assembly
  - Add STEP-NC files containing process plan
  - Add ISO 13399 files containing tooling
  - Add MTConnect files containing executed process
  - Add QIF files measurements
- STEP-NC file has UUID's for workpieces in STEP file
- ISO 13399 file has UUID's for cutters in STEP-NC file
- MTConnect file has UUID's for workingsteps in STEP-NC file
- QIF file has UUID's for tolerances in STEP file



Find UUID' associations as data files dragged and dropped into container